

# **28 CHESTNUT**

## NORTH RIVER LEERINK

### **Construction Update For 28 Chestnut Street - Scheduled Activities for 8.14.22 – 8.20.22**

The following is a list of activities expected to take place:

- Saturdays, August 13<sup>th</sup> and 20<sup>th</sup> are projected to be workdays. Similarly, extended work hours Saturday and Monday thru Friday are anticipated and will be compliant with the City of Somerville ordinances.
- **North End Work:**
  - Continue steel erection and metal deck installation
    - Focus area will be north tower, Levels 2 and 3
  - Continue to load-in and install the lower-levels of the parking garage slabs' rebar and welded wire fabric.
  - Below the lowest level of parking garage, P2, continue the installation of the underground plumbing systems.
  - All trucking to support these north end works will enter/exit the neighborhood from the north, Chestnut, Joy and Poplar Streets.
    - Anticipated that <10 delivery trucks per day will make deliveries to the north end of the site.
  - No parking will remain in effect along the west curb line of Chestnut Street, with signs installed, as per the City of Somerville.
    - During work hours, when the erection crane is in service, vehicular travel in the vicinity of the crane will be reduced to single-lane traffic. When the erection crane is not in use, it will be parked to accommodate two-way vehicular travel.
  - On Saturday, August 13<sup>th</sup>, anticipated that there will be steel erection and metal decking installation, similar to a typical Monday thru Friday, albeit with the 9AM Saturday start time.
    - Including steel erection crane working and some steel deliveries.
- **South End Work:**
  - Continue the installation of metal decking and shear studs.
    - This activity is of a progressive nature and will continue vertically throughout next week. Currently, the shear studs are being installed on Level 4, with Level 5 targeted to commence Friday, August 19<sup>th</sup>.
  - Continue receiving/offloading/material handling in support various building materials.
    - To include multiple crafts as the project begins to add labor to construct various elements of the work, with trades including earthwork, masonry, and spray-fireproofing.
    - Deliveries in support of these new works will include daily trucking entering/exiting the neighborhood from the north on Joy and Chestnut Streets, with <20 delivery trucks per day will be entering the south end of Chestnut Street.
  - Interior concrete slab preparatory works will continue on the two levels of below grade parking, including underground plumbing and concrete slab reinforcing steel installations.
  - Interior concrete slab preparatory works will continue various levels, including Levels 1 (street grade) 2, 3, 4.
  - On Thursday, August 18<sup>th</sup>, there will be concrete slabs placed on Level 2 south. and its projected that these placement efforts will include a concrete pump positioned on Fitchburg Street and redi-mix concrete trucks making delivery to the concrete pumps' hopper.
    - It's anticipated that the actual concrete pump placement will commence at 7:30AM and be completed by 4:30PM. Cement finishing operations are expected to require extended work hours, possibly until 8:00 PM.
    - There will be approx. 25 concrete trucks making deliveries on this day.
  - There will be a dedicated soil load-in effort occurring most days, at street grade level.

## **28 CHESTNUT**

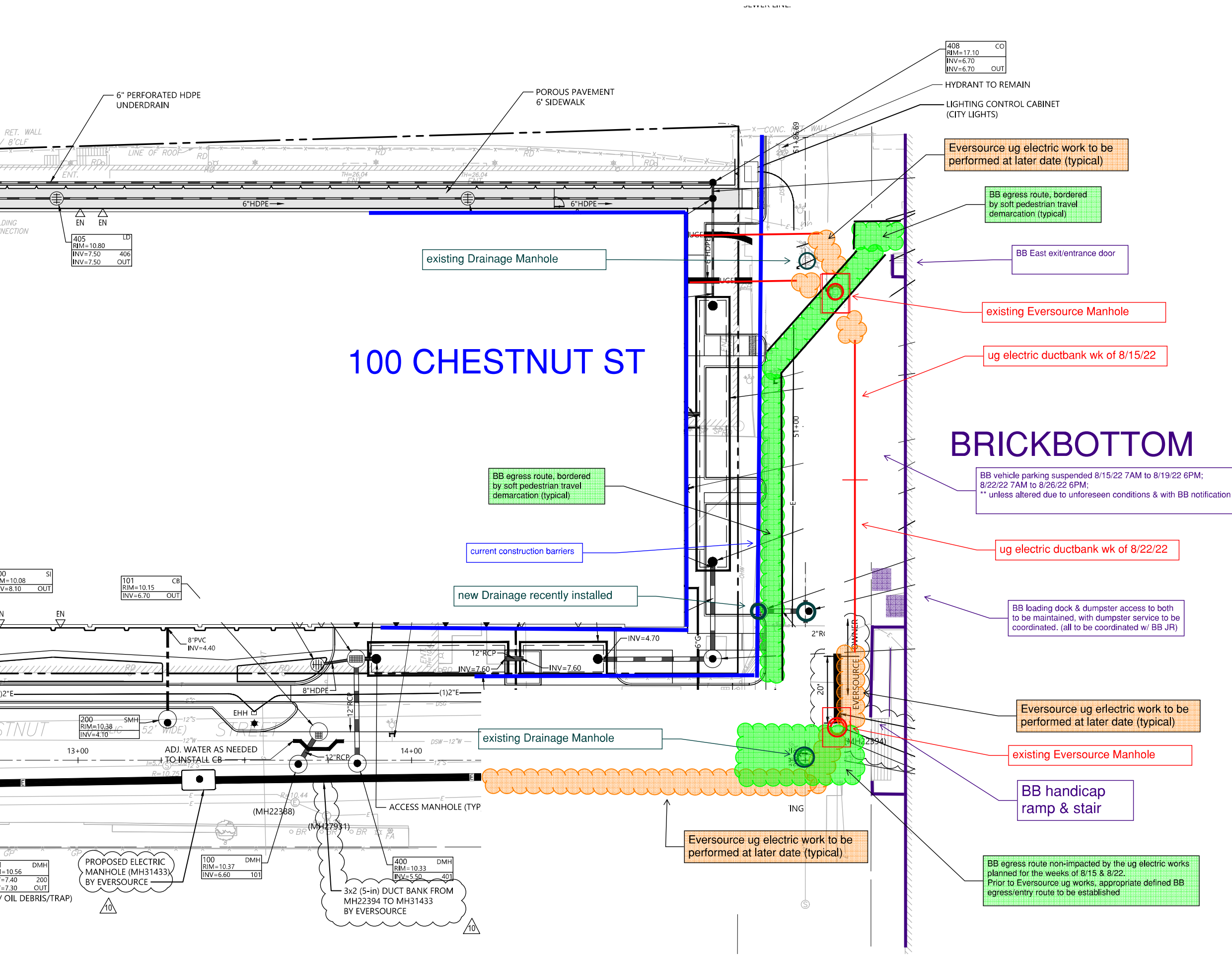
### NORTH RIVER LEERINK

- This will include trucks and/or backhoe loader equipment depositing soils adjacent to Chestnut Street at the south gate entrance to the site.
  - A backhoe will transfer these soils from where they were deposited to load them into the lower level of the parking garage to be used for grading of the parking garages' slab on grade.
- South of the building, there will be various works performed to help "reset" the work area and to prepare for additional trade works which will mobilize/commence work within the next few weeks.
- There will be excavation and installation of underground electric at the building entrance, extending towards the current construction barriers, which will align with the underground electric works being performed within Fitchburg Street.
  
- **Chestnut and Fitchburg Streets Utility Work:**
  - Sporadically throughout the week and during non-truck delivery times, there will be a small excavation effort working within Chestnut Street performing test pits to confirm the locations of the existing utilities so that the new utility work parameters can be finalized and the proper materials ordered.
  - Commence the underground electric work within Fitchburg Street.
    - This work, which has had multiple months of coordination with Eversource Electric, will be focused on the east end of Fitchburg Street.
    - Will unfortunately require Brickbottom resident parking displacement from Monday, August 15<sup>th</sup> at 7:00AM until Friday, August 19<sup>th</sup> at 6:00PM.
    - Similarly, work from the midway point of Fitchburg to the intersection of Chestnut Street will be performed the of August 22<sup>nd</sup>, including the same Brickbottom resident vehicle displacement.
    - To include a small backhoe excavating trenches for the installation of the new underground electric service conduits.
    - After electrical conduits are installed and fully inspected, conduits will be concrete encased and backfilled with soil.
  - A temporary asphalt pavement patch will be installed over these trenches and will remain in place thru this coming winter, with this section of Fitchburg St cobblestone roadway being fully rebuilt in the Spring 2023.
    - During the installation of this underground electric, all entrance/egresses, handicap ramps, loading docks, dumpster access, emergency and first responder accesses, etc. to Brickbottom will be maintained.
  - Displaced cobblestones during installation of drainage structures have been saved and stored at the far end of Fitchburg Street in prep of reuse when Fitchburg Street cobblestones are re-laid in Spring 2023.
    - A restacking/restaging of these cobbles will occur in the near future to ensure that these stored cobbles don't prevent use of the Brickbottom parking areas or impede this winters' snow plowing efforts.

The project team will keep in touch with and update Juan of all works south of the buildings, and those that are in close proximity to the Chestnut Street and Fitchburg Street intersection.

Thank you for your continued support and understanding.

Sincerely,  
North River Leerink & Consigli Construction



100 Chestnut Street  
Somerville, MA 02143

## NORTH RIVER COMPANY

610 West 26th Street  
Suite 910  
New York, NY 10001  
Tel 212.695.8090

## Gensler

One Beacon Street  
Third Floor  
Boston, MA 02108  
United States

Tel 617.619.5700  
Fax 617.619.5701

CIVIL ENGINEER  
VHB  
101 Walnut Street  
PO Box 9151  
Watertown, MA 02472-4026  
Tel 617.607.2601  
Fax 617.924.2286

STRUCTURAL ENGINEER  
Mcnamara Salvia  
101 Federal Street  
Suite 1100  
Boston, MA 02110  
Tel 617.737.0040

CONSTRUCTION MANAGER  
Consigli  
266 Summer Street  
Boston, MA 02110  
Tel 617.259.1007

LANDSCAPE ARCHITECT  
OJB Landscape Architecture  
1 Bowdoin Square Suite 801  
Boston, MA 02114  
Tel 857.233.5171

MEPFP, LIGHTING &  
ENVELOPE ENGINEERS  
Buro Happold Engineering  
11 Beacon Street Suite 400  
Boston, MA 02108  
Tel 617.419.2284